



REGROW BIOSCIENCES PVT. LTD.

HEAD QUARTERS

2-ABC, Acme Plaza, Andheri-Kurla Road,
Andheri (East), Mumbai – 400059, India

Tel: +91-22-67330300

Toll-Free No.: 1800 209 0309

GMP FACILITY

22, Shah Industrial Estate, Nangargaon,
Lonavala - 410401, Maharashtra, India

Tel: +91-2114-273741/42/43

Licensed By: State Food and Drugs Administration, Pune & Drugs Controller General of India (DCGI), Govt. of India

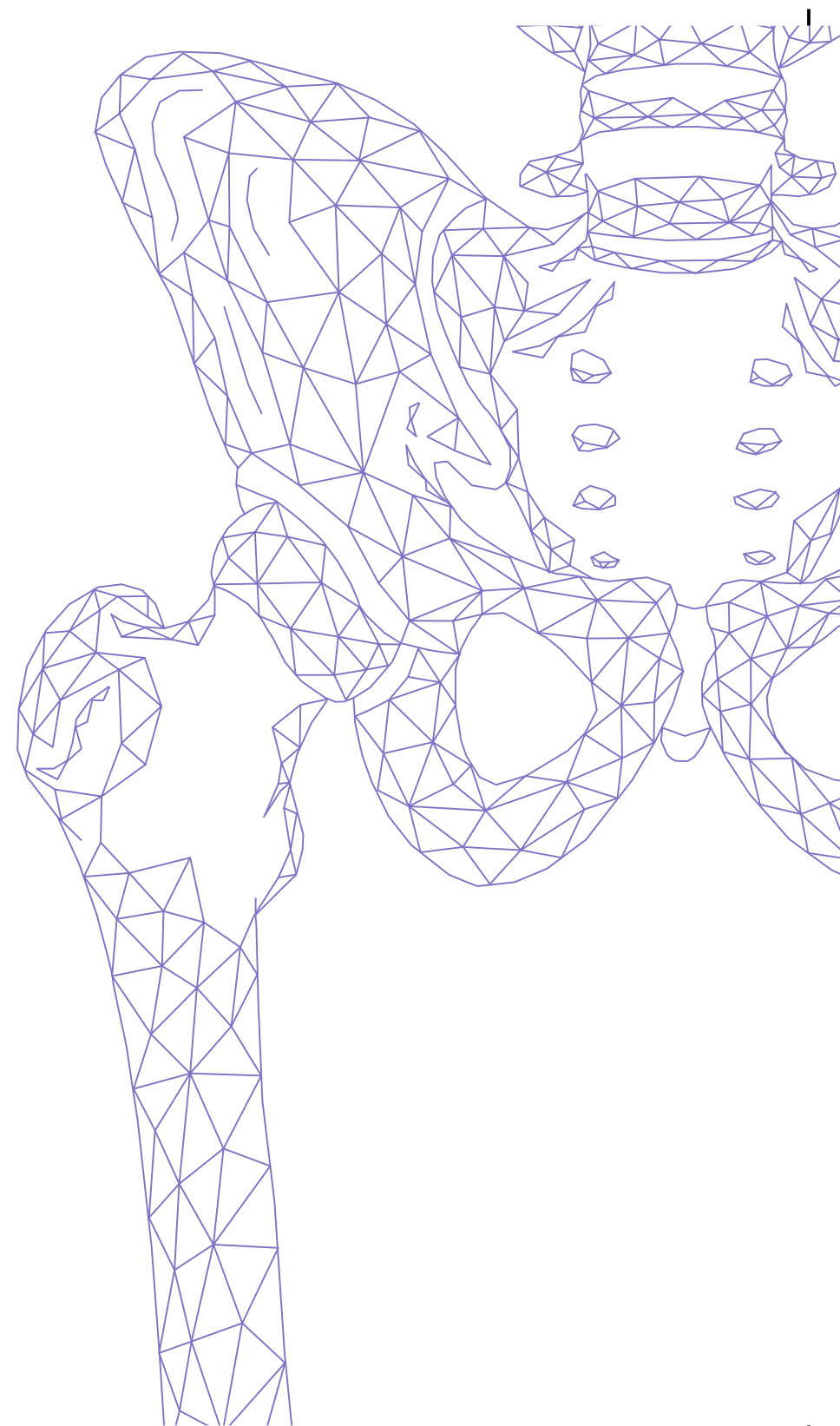
Disclaimer: "This document contains confidential and proprietary information of Regrow Biosciences Pvt. Ltd. which is intended for personal use of treating physicians or specialists and it intends to serve as a guideline ONLY and not an absolute recommendation for implantation of osteoblast cells. This information can only be used for educational and training purposes and in no way, it intends to define or suggest surgical protocol. The treating physician or specialist determines appropriate protocol and techniques required for implantation of osteoblast cells. The treating physician or specialist should be familiar with the contraindications of performing the implantation of osteoblast cells. Treating physician's or specialist's judgement is required to consider patient's risk factor prior to performing the implantation of osteoblast cells. Regrow Biosciences Pvt. Ltd., its officers, directors, agents, attorneys, employees, shareholders, consultants and affiliates do not take any responsibility or liability if the manual is used by anyone for any other purpose. Regrow and logos containing Regrow brand mark are trademarks of Regrow Biosciences Pvt. Ltd. Other brands are trademarks of Regrow Biosciences Pvt. Ltd. or their respective owners."

✉ info@regrow.in | 🌐 www.regrow.in

© Copyright 2022. Regrow Biosciences Pvt Ltd. All Rights Reserved.



OSSGROW® BIOPSY MANUAL





FOR MORE DETAILS, PLEASE REACH OUT TO US:

Dr. Charul Bhanji
Technical Director

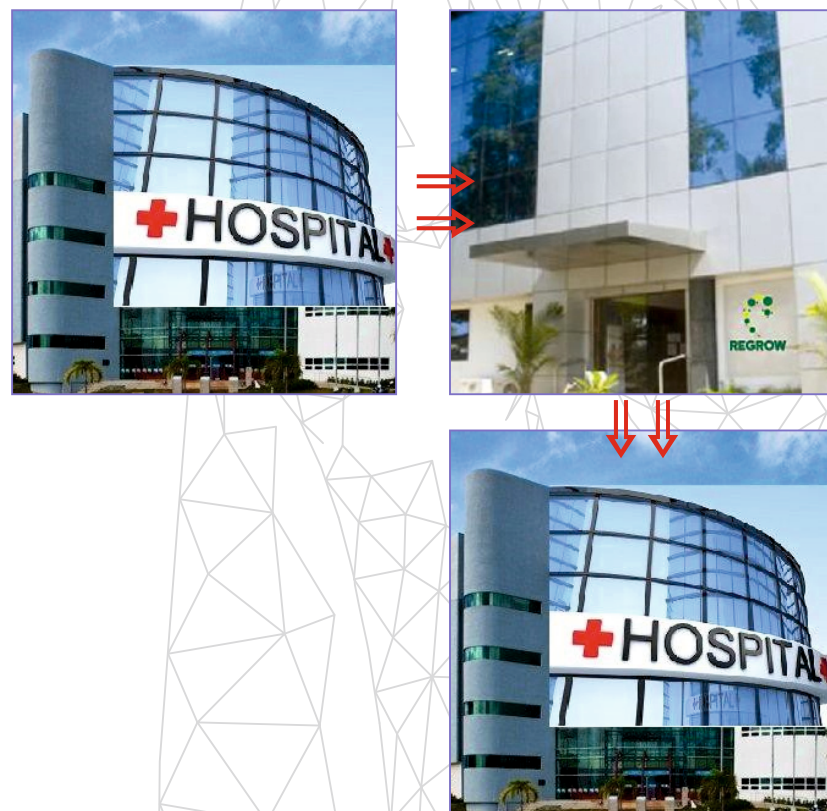
📞 +91 9821186618

✉ drcharul@regrow.in

OSSGROW®

TRANSPORT FROM HOSPITAL TO GMP LAB

- ▶ By Day 10, Regrow team will update the clinician about the status of the sample.
- ▶ Regrow coordinator will inform the hospital for the tentative implant date well in advance, so that patient can be informed for second step of implantation.



CONTENTS

- ▶ CONTENTS OF PRODUCT BOX
- ▶ CONTENTS OF TRANSPORT KIT
- ▶ PRECAUTIONS BEFORE SAMPLE COLLECTION
- ▶ HEPARIN FLUSH PROCEDURE
- ▶ **OSSGROW®** BIOPSY PROCEDURE
- ▶ TRANSPORT FROM HOSPITAL TO GMP LAB

Pg. No.

-1
-2
-3
-4
-7
-11

CONTENTS OF THE PRODUCT BOX

1 - TRANSPORT KIT

2 - BONE MARROW ASPIRATION NEEDLE [2 NOS.]

3 - POUCH CONTAINING:

- EDTA tube (Purple color) for Infectious Disease Testing [1 No.]
- Parafilm for covering tubes

Note: Total 3ml blood is to be withdrawn for Infectious Disease Testing.

! In case of Bilateral case, use two Transport Kits.



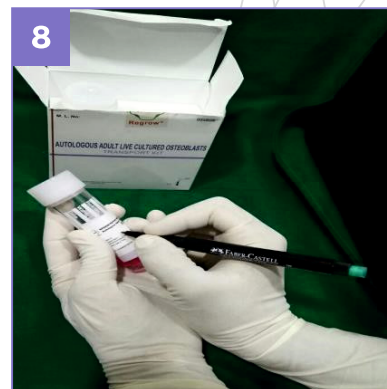
OSSGROW® BIOPSY PROCEDURE

- Keep Transport Kit in allotted space in the Product Box along with the data logger (the data logger should be in **ON** condition) (Fig 11)
- Seal the Product Box with sealing tape. (Fig 12) and Place in side Transport Box (with pre-conditioned gel packs)
- Store the Transport Box in upward position in custody of the hospital at room temperature away from light in dry closed area until shipment to the lab for process (Fig 13)
- The Transport Box should be picked up by the approved logistics department or agency for shipment to Regrow lab for further processing (Fig 14)



OSSGROW® BIOPSY PROCEDURE

- ▶ Capture patient ID, sample collection date and time on the sticker of the inner vial with the help of permanent marker. (Fig 8)
- ▶ Pack the Inner Vial(s) into the Outer Vial(s) and capture patient ID, sample collection date and time on the sticker of the Outer Vial(s) with the help of permanent marker. (Fig 9)
- ▶ Place the Outer Vial(s) inside the Transport Kit. Seal the Transport Kit with seal proof/tamper proof sticker provided and capture Patient ID, sample collection date and time wherever applicable. (Fig 10)



CONTENTS OF TRANSPORT KIT

- 1 - OUTER VIAL (NON STERILE) [2 NOS.]
- 2 - INNER VIAL WITH 10ML CULTURE MEDIA (CONTENTS ARE STERILE) [2 NOS.]



To handle the Transport Kit in an aseptic manner by unscrubbed staff or attending paramedic only.



PRECAUTIONS BEFORE SAMPLE COLLECTION

Step wise instructions to be followed:

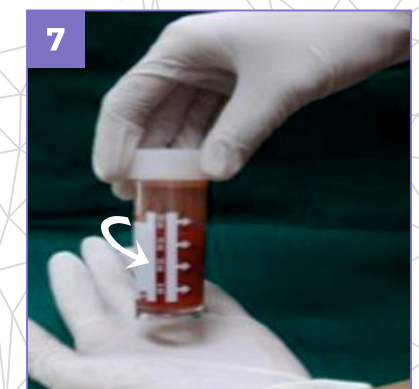
STEP 1 Place Inner Vial(s) on separate trolley for sample collection.

STEP 2 Color of solution should be reddish-pink, if color changed to yellow or brown of any vial, do not use the Transport Kit, instead, use new Transport Kit.

STEP 3 If any vials in the Transport Kit are damaged or has caused leakage, do not use the kit, instead, use new Transport Kit.

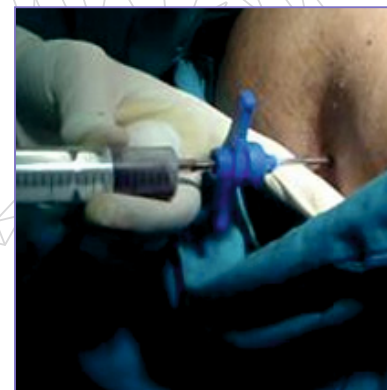
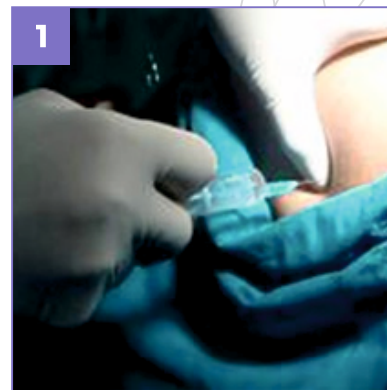
OSSGROW® BIOPSY PROCEDURE

- ▶ Once you have capped the Inner Vial(s), hold it vertically in your palm and rotate it in the angle of 90 to 180° (vertical action for 4 times). (Fig 4 & 5)
- ▶ Rotate the Inner Vial(s) in clockwise (Fig 6) or anticlockwise (Fig 7) (In centrifugal manner) for 4 times each.



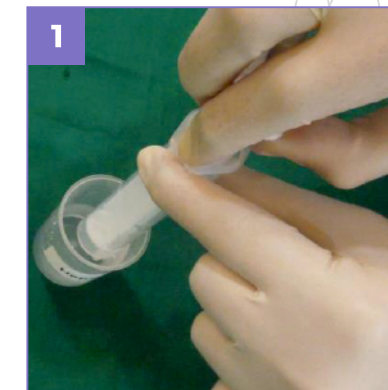
OSSGROW® BIOPSY PROCEDURE

- ▶ The biopsy procedure must be performed in the operation theatre only.
- ▶ Harvest bone marrow from iliac crest near to posterior superior iliac spine using jamshidi needle No. 11 along with 20ml (minimum) sterile syringe. **(Fig 1)**
- ▶ Collect 4ml of bone marrow sample from each side of the iliac crest. Draw out the bone marrow sample and transfer aseptically to Inner Vial(s) containing 10ml culture media (sterile). **(Fig 2)**



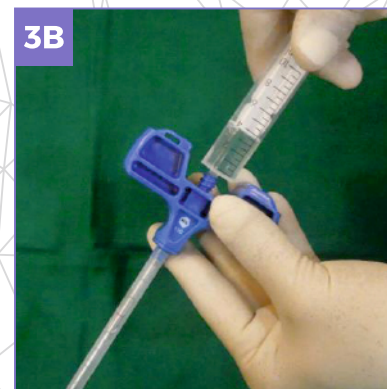
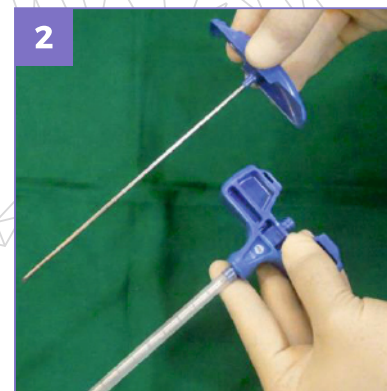
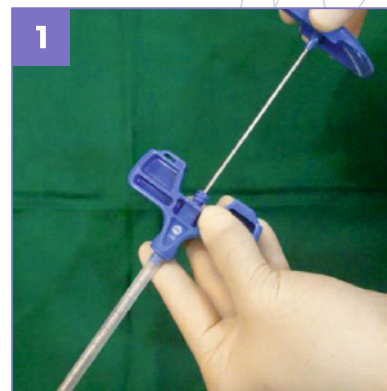
HEPARIN FLUSH PROCEDURE

- ▶ Arrange the sterile trolley in operation theatre containing sterile gloves, bone marrow harvest needle, 20ml syringe (1 No.), 10ml syringe (1 No.) and heparin solution.
- ▶ Rinse the 20ml syringe with upto 2ml of heparin solution. Aspirate the solution till it covers the whole syringe and rinse. **(Fig. 1 & 2)**
- ▶ Flush out the heparin off the syringe to discard. **(Fig. 3)**



HEPARIN FLUSH PROCEDURE

- ▶ Remove the stylet from the bone marrow aspirate needle. Keep it aside. (Fig. 1 & 2)
- ▶ Load 20ml syringe filled with heparin solution (Fig. 3A & 3B)



HEPARIN FLUSH PROCEDURE

- ▶ Rinse the whole needle till it reaches at the top level. Rinse 2-3 times. Flush the contents in the bowl and discard (Fig. 4 & 5)
- ▶ Attach the stylet again to the bone marrow aspirate needle which is now ready for bone marrow aspiration.

