

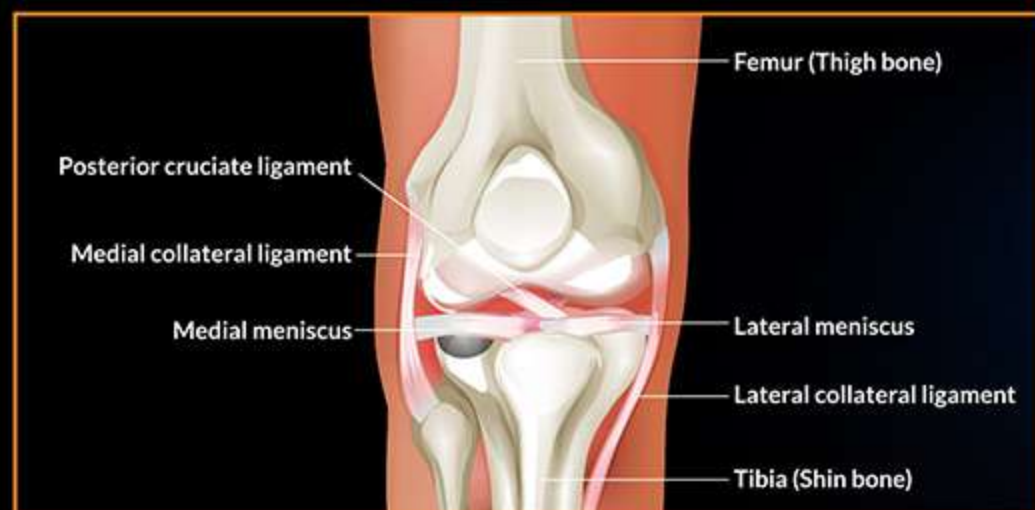
A soccer player in a blue jersey and shorts is captured in a dynamic, mid-air pose, kicking a ball. The player is wearing blue socks and blue and pink cleats. The background is dark with vibrant, swirling orange and red light trails that create a sense of motion and energy. A large, thin orange circle is overlaid on the scene, framing the player and the text.

CARTIGROW®

**CARTILAGE
CELL THERAPY**

Cartilage Tissue

Cartilage is a specialized type of connective tissue that covers the surfaces of bone within a joint.



Some of the key functions of **articular cartilage** include: *Joint lubrication, shock absorption, load bearing capacity and maintaining overall joint stability.*



Cartilage Damage

Damage to the cartilage is a common condition with several possible causes. Chronic or repetitive actions such as *exercise, sports or physical work* can cause cartilage to weaken and wear out over time. Acute or traumatic events such as fall can cause immediate and severe cartilage damage.



Symptoms of Cartilage Damage

Patients may face single or multiple symptoms depending on the extent of the damage caused in the cartilage tissue of their joint. Once damaged, cartilage tissue is unable to heal or regenerate itself.

Due to lack of blood supply to the cartilage, it slowly degenerates and may cause early osteoarthritis.

Only surgical intervention can help patients get back to pain-free movement and an active lifestyle.

Symptoms of Knee Cartilage Damage



PAIN



SWELLING



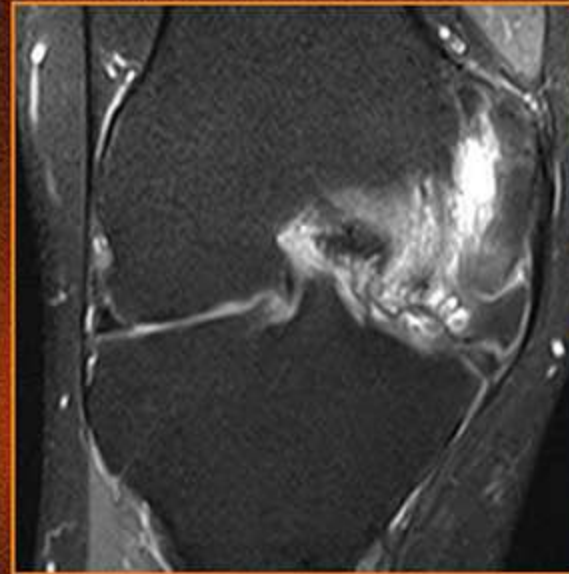
CLICKING



LOCKING

Diagnosis of Cartilage Damage

A MRI scan is the most widely used diagnostic tool available to clearly identify the location and extent of cartilage damage. It can also reveal any other associated injuries, if any, in the ligaments, meniscus or bone. Based on the grade of injury, the orthopaedic surgeon is able to recommend the best possible treatment plan.



Cartilage injury on MRI

Regenerated new
cartilage after
CARTIGROW®
treatment.



Cartilage Cell Therapy

CARTIGROW[®] Cartilage Cell Therapy is a minimally invasive, patient specific regenerative medical treatment which consists of harvesting a patient's own cartilage tissue, cell expansion, and implantation of the cartilage cells at the damaged site. This leads to the regeneration of new cartilage tissue.

Ten year clinical outcomes of patients who underwent **CARTIGROW**[®] Cartilage Cell Therapy have reported significant pain reduction, improved function and durable cartilage tissue regeneration.



Scan to view



Cartilage Strengthening Program

After your treatment, your physical therapist in association with the orthopaedic surgeon will provide you with a customized rehabilitation plan which will enable you to have a fast recovery. Based on the grade of injury, the orthopaedic surgeon is able to recommend the best possible treatment plan.



Benefits and Advantages



CARTIGROW®
Cell Therapy is
made from you,
for you.

‘MyCartigrow’ offers patients exclusive support towards:



**Treatment
Education**



**Connect to a
CARTIGROW®
specialist**



**Insurance
Support**

Scan to Chat



Notes

REGROW BIOSCIENCES® PVT. LTD.

HEAD QUARTERS

2-ABC, Acme Plaza, Andheri-Kurla Road,
Andheri (East), Mumbai – 400059. India

Tel: +91-22-67330300

Toll-Free No.: 1800 209 0309

 info@regrow.in |  www.regrow.in

Disclaimer: This booklet provides basic information on Cartilage Defects and Cartilage Cell Therapy (CARTIGROW®) for the treatment of Cartilage Defects. The intent of this booklet is to educate its users about Cartilage Defects and Cartilage Cell Therapy (CARTIGROW®) and it does not recommend self-management of health issues. Your use of this booklet does not establish a doctor-patient relationship. The information provided in this booklet is intended for general knowledge and is not an attempt to practice medicine or provide specific medical advice or a substitute for professional medical advice or treatment for medical conditions and it should not be used to make a diagnosis or to replace or overrule a qualified healthcare provider's judgment. Please consult your healthcare provider to diagnose any health problems and to answer any questions or concerns you may have regarding your condition. All efforts have been made to provide information as accurate as possible. Although the content of this booklet is generally reviewed and Cartilage Cell Therapy (CARTIGROW®) is approved by Indian FDA, we do not make any representation or warranties or take any responsibility or liability with respect to the accuracy, applicability, timeliness, fitness or completeness of the contents of this booklet, and any other warranty, express or implied, or for any errors or omissions in this booklet, for the results obtained from its use, or for any damage or loss caused or alleged to be caused by reliance on the information available in this booklet. All the contents herein are the property of Regrow Biosciences Pvt. Ltd. and protected by the Indian Copyrights and other applicable laws. Any unauthorized copying, distribution or translation will constitute an infringement of copyright and other applicable act. Regrow and logos containing Regrow brand mark are trademarks of Regrow Biosciences Pvt. Ltd. Other brands are trademarks of Regrow Biosciences Pvt. Ltd. or their respective owners.