



# Regrow

www.regrow.in

## Healthcare Digest

Vol. II, Issue No. 4, September 2011

### CHONDRON™

#### AUTOLOGOUS CARTILAGE CELL IMPLANTATION

Chondron™: Autologous Cartilage Cell Implantation is a complete regeneration solution to restore patient's own cartilage.

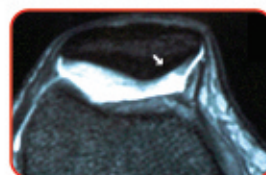
It is a novel surgical approach used to treat full-thickness cartilage defects for patient's who have significant, symptomatic defects or damage to the cartilage of the knee caused by acute or repetitive trauma.

Chondron™ is derived from *ex vivo* expansion of autologous chondrocytes (cartilage cells) harvested from a patient's normal knee joint.

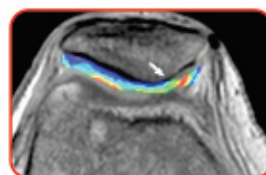
Biopsy from a non-weight bearing area is the source of chondrocytes which are isolated, expanded through cell cultivation process, and ultimately implanted into articular cartilage defect of the patient's knee or ankle joint.



#### PRE-OP & 8 MONTHS POST-OP IMAGES (CASE 3)



Pre-Op (MRI)



Post-Op (MRI): 8 months

#### PRE-OP & 7 MONTHS POST-OP IMAGES (CASE 6)



Pre-Op (MRI)



Post-Op (MRI): 7 months

#### CARTILAGE PATELLA DEFECTS TREATED WITH ACI: CHONDRON™

**Statistics:** • Average age of patients: **26 years** • Average patellar defect size: **3.0cm<sup>2</sup>** • Average follow-up rate is more than **14 months**

CASE	PATIENT DEMOGRAPHICS (Age/Sex)	INDICATION	DEFECT SIZE	TIME LAPSED
1	28 years / Male	Chondromalacia Patellae of the Left Knee	0.8 x 0.8 cm	12 months
2	16 years / Female	Osteochondral Injury to the Patellar Articular Surface	2.4 x 1.8 cm	9.5 months
3	30 years / Female	Osteochondritis Dessiccance of Patella of the Left Knee	2.2 x 2.0 cm	16 months
4	33 years / Male	Chondromalacia Patellae of the Right Knee	12 X 12 cm	32 months
5	20 years / Female	Osteochondritis Dessiccance of Medial Facet Of Patella of the Right Knee	2.0 X 2.0 cm	10 months
6	24 years / Female	Traumatic Patellar Dislocation In the Right Knee	2.0 X 2.0 cm	9.5 months
7	34 years / Male	Osteochondritis Dessiccance of Patella	15 X 15 cm	11 months



#### LAUNCHES SPORT GENE TEST WITH



BabyCell in association with Super Religare Laboratories (SRL) has become the first Cord Blood Bank in the country to provide **Sport Gene Test** to new parents to identify the sporting potential in their child. Sports Gene Test is a simple, non-invasive test, which only involves buccal swab collection.



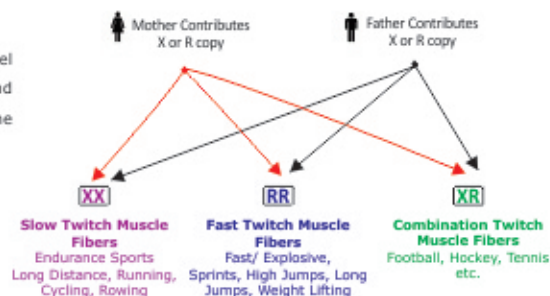
Often at times, with the best of nutrition and right coaching, a child is not able to excel in sports, much to the disappointment of the parents. The answer can easily be found inside the child's body- in the form of a gene called **ACTN-3**, widely referred to as the sports gene. The ACTN3 gene essentially produces a protein which helps **fast-twitch muscle fibers** to produce **high energy surges for a short time**.

Therefore, after taking the sports gene test, you can find out what type of sport your child may perform best at.



Spot the sport that suits your child the best!

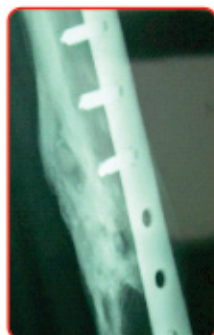
#### PARENTAL GENOTYPE EXPRESSED IN CHILD



# OSSRON™ (AUTOLOGOUS BONE CELL IMPLANTATION) FOR NON-UNION FRACTURE TREATMENT



Pre-Op (X-Ray)

Post-Op (X-Ray)  
8 monthsPost-Op (X-Ray)  
13 months

## CASE 1: 33 years / Male

- Patient suffered an open comminuted condylar fracture of distal 3<sup>rd</sup> femur in a road accident in 2009.
- Docking & plating was done, along with bone grafting (from right iliac) in 2009. However, union of fractured bone did not take place.
- **Ossron™** was advised in 2010 by the surgeon. Bone marrow harvest was done followed by implantation of cultured osteoblast.
- Patient followed proper rehabilitation as advised by the surgeon for over a period of 1 year.
- At the end of 13 months, X-Ray showed **remarkable callus formation suggestive of union of fractured femur.**

## CASE 2: 35 years / Male

- Patient had a bike accident in Feb 2009 and fractured his Right leg- Tibia and Fibula.
- External fixators were applied by the doctor but fractured bone did not unite.
- Fracture was stabilized with Ilizarov technique in Jan 2010 with addition of fibula graft.
- Infection with purulent discharge was set-in in month of Jan 2010.
- Ilizarov apparatus was removed by end of Jan 2010.
- Infection was brought under control with medication by Mar 2010.
- Non-union fracture persisted till mid 2010. Later, non-union fracture was implanted with **Ossron™** in Jul 2010, as per suggested by physician and surgeon.
- 3 months post-op X-Ray showed callus formation at the fractured site. **Complete union was seen at the end of 10 months.**



Pre-Op (X-Ray)

Post-Op (X-Ray)  
3 monthsPost-Op (X-Ray)  
10 months

## Theraform™



FOR **SmileTrain** PATIENTS  
Changing The World One Smile At A Time.



Theraform™

**Theraform™** an Absorbable Biocollagen Membrane is a sterile, pliable surgical porous scaffold agent made of highly purified type I atelocollagen derived from porcine skin, which is applied directly on wound to help tissue regeneration.

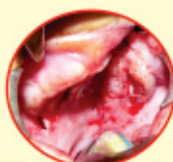
**SmileTrain** is a non-profit organization with the mission of providing free corrective surgery for children with cleft lip and palate in about 80 developing countries. Cleft palate is a condition in which the two plates of the skull that form the hard palate (roof of the mouth) are not completely joined.

**RMS-Regrow®** has provided **FREE** supply of **Theraform™** for many cleft palate patients under **SmileTrain** care. Following are two such cases:

### CASE 1: 8 Months/Female child



Pre-Op



Theraform™ Application



Post-Op

- Patient with a congenital defect of cleft palate.
- She was introduced to "Smile Train" NGO, who helped her get treated for the defect using Theraform™
- The patient showed tissue regeneration at the site of operated defect in just **8 days.**

### CASE 2: 11 Months/Female child



Pre-Op



Theraform™ Application



Post-Op

- Patient with a congenital defect of cleft palate.
- She was introduced to "Smile Train" NGO, who helped her get treated for the defect using Theraform™
- The patient showed remarkable filling of operated defect in just **10 days**

## REGENERATIVE MEDICAL SERVICES PVT. LTD.

2-ABC, Acme Plaza, 2nd Floor, Andheri-Kurla Road, Andheri (E), Mumbai – 400 059. Tel: 91-22-6733 0300 / 6158 6400 • Toll free no: 1800 209 0309 • Fax: 91-22-2839 0556 / 6676 4269  
• Email :info@regrow.in • Website : www.regrow.in

For informational purposes and private circulations only